



Faria[®] **WATCH DOG[™]**



VMS Tracking Owner's Manual

ISO239A
ECR#XXXX 4/2007

Index

Welcome Aboard	page 1
Parts List	page 2
Installation	page 3
Let's Get Started	page 7
Device Activation	page 8
Serial Number	page 8
Your Information	page 8
Your Vessel Information	page 8
Payment Information	page 9
Disclaimer	page 9
Faria WatchDog™ VMS Tacking on-line	page 11
www.vmstracking.com	page 11
Vessel Status	page 13
Status Bar	page 13
Map	page 13
Alert Status	page 13
WatchDog™ Settings	page 15
Battery Level Alerts	page 15
Assistance	page 16
Setting up your Notification and Alert List	page 17
e-mail and Phone lists	page 17
Notifications	page 17
Alert List	page 18
Assistance List	page 18
Message Log	page 21
Position History	page 23
WatchDog™ Maps	page 26
2-inch User Interface	page 27
Installation	page 28
Operation	page 28
Assistance Button	page 28
Diagnostics	page 30
Faria VTERM™	page 33
Installation	page 34
Power-up	page 35
Functions Keys	page 35
Keyboard (if available)	page 36
e-mail Operation	page 37
Writing and Sending an e-mail	page 37
Reading e-mail	page 38
Address Book	page 38
Displaying Settings	page 38
Faria WatchDog Warranty	page 41

Safety Notice - *The Faria WatchDog™ VMS system is only an aid to the operation of a boat. The performance of the system can be affected by many factors including but not limited to equipment failure, environmental conditions, improper installation, handling and/or use. This device should not be used for any navigational or safety purpose.*

FCC Notice – Your Faria WatchDog™ system complies with Parts 15 and 80 of the FCC Rules. Operation is subject to the condition that this device does not cause harmful interference. Changes or modifications to this equipment not expressly approved in writing by the Faria WatchDog Inc. could violate compliance with FCC rules and void the operator's authority to operate this equipment. An FCC Ship's Radio License and Operator's License are not required for use of your WatchDog™ system.



Welcome Aboard

Congratulations on the purchase of your Faria WatchDog™ 750VMS system. This owner's manual contains very important information on the installation, operation and maintenance of your telematics system. To get the best results in operation and performance please take a few minutes to read this manual and familiarize yourself with your Faria WatchDog™ system.

Repairs and/or Technical Service – Repairs and adjustments to your system require specialized service procedures and tools available only to qualified service technicians. There are no user service parts or adjustments. The operator of this system should never remove the covers or attempt to service this equipment.

For technical support or repairs please contact:

Faria WatchDog™ Inc.
P.O. Box 486
385 Norwich-New London Turnpike
Uncasville, CT 06382
Telephone: 877-888-5569
e-mail: support@fariawatchdog.com

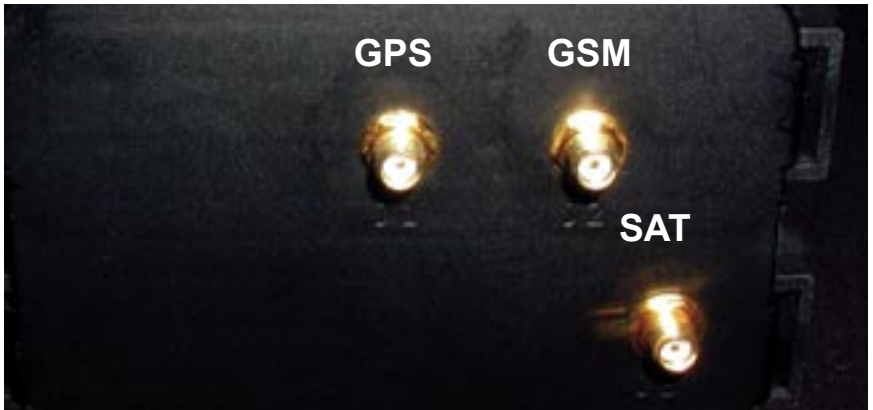
Notice - The Faria WatchDog™ system is only an aid to operation of a boat. The performance of the system and the system performance specifications can be affected by many factors including but not limited to equipment failure, environmental conditions, improper installation, handling and/or use. This device should not be used for any navigational or safety purpose. The Faria Watchdog is used at your sole risk and in no event shall Faria WatchDog, Inc. be liable for any costs, losses, liabilities, damages, expense or claims of any nature incurred or sustained in respect of this device or its use. You further indemnify and hold harmless Faria Watchdog, Inc. from any liability or loss resulting from use of the device.

PARTS LIST		
PART #	DESCRIPTION	QTY.
AN0007	GPS Antenna	1
AN0008	GSM Antenna (Cell)	1
AN0009	Iridium Antenna (Satellite)	1
BK0126	Antenna Bracket (SB unit has 2)	3
DM0100	2" Operator Interface	1
GWD012	Faria WatchDog™ 750VMS System	1
HN0606	Power Harness	1
HN0609	GPS Antenna Cable	1
HN0610	Iridium Antenna (Satellite) Cable	1
HN0611	GSM Antenna Cable (DB model only)	1
IS0239	Faria WatchDog™ 750VMS Instruction Manual	1
SC0140	Screw, #12 X 4 SS	2
SC0141	Screw, #1/4 X 1, SS	9
SC0142	Screw, #12 X ¾, SS	3
CN0023	Watertight In Line Fuse Holder	2

Installation:

It is recommended that you use a certified Faria WatchDog™ installer, like your dealer, for installation.

- 1) Locate area to mount the three antennas (keep in mind cable length is only 28 feet long) (SB units have only two antennas, Iridium and GPS)
- 2) Connect antenna cables to the antennas, through the mounting bracket.
- 3) Drill hole(s) for antennas to run to connect to the Faria WatchDog™ box.
- 4) Run cables to mounting location of the Faria WatchDog™ box.
- 5) Connect HN0606 power harness to the Faria WatchDog™ box (GWD012) at receptacle "A".
- 6) Mount box in an area where there is easy access to antenna cables and the battery.



- 7) Connect the GPS antenna cable to the GPS connector (J1).



- 8) (DB models only) Connect the GSM (cell) antenna cable to the GSM connector (J2).



9) Connect the Iridium (Sat) antenna cable to the SAT connector (J3).



10) Mount 2" interface so that the LCD screen is visible. (for mounting instructions, see page 28)



HN0606

- 11) Connect four-pin connector from the 2" User Interface to the four-pin connector from the power harness.



- 12) Connect the purple and the red wire directly to the positive battery terminal.

*If run of wire to battery terminal is greater than 72" you must install a 5A in line fuse provided in your kit

- 13) Connect the black wire to a good vessel ground (battery negative).
- 14) If you have a back-up battery connect red/white to positive battery terminal.
- 15) Connect black to vessel ground or back up battery negative.

Go to the "User Interface" section for a description of screens displayed on the User Interface, page 30.

Log on to www.vmstracking.com to log in. Use the Registration button to register your Faria Watchdog product. (see "Let's get started", see page 7)

If you have any questions or need technical support call 877.888.5569 or e-mail us at information@fariawatchdog.com.



Let's get started.

Your Dealer should have already performed the installation and Registration for you. The Faria WatchDog™ Dealer network has been put into place to make using the Faria WatchDog™ VMS unit as easy as possible. If your Dealer has already installed and registered your VMS system then please skip this section. Congratulations you are ready to start using your Faria WatchDog™ VMS system. Continue to page 11.

If you preferred to do the installation yourself don't worry the Faria WatchDog VMS system is designed to be easily configured. (see page 3 for installation instructions.)

To begin, log on to **www.vmstracking.com** and complete the registration form for your Faria WatchDog™ system. Be sure to have the following information before starting the registration process:

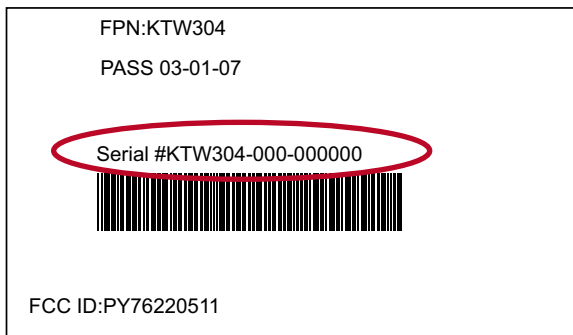
1. Faria WatchDog™ Serial Number
(located on the label of your control box)
2. Valid Credit Card (Visa, Master Card, Amex)

Remember to Complete all required fields (indicated with an *)

Device Activation (Fill out all fields in this section.)

Serial Number:

Enter your WatchDog™ Serial Number. This number is located on a label on the WatchDog™ control box.



E-mail Address:

This will be the address that your monthly statement will be sent to, as well as your website log-in name.

Verify E-mail Address:

Password:

Enter a password, must have at least 6 characters.

Verify Password:

Your Information (Fill out all fields in this section.)

Be sure to check if you want WatchDog™ to contact you on the listed mobile phone number or e-mail address. You can always change this information later.

Your Vessel Information

This information is important. Your vessel name and document numbers are the primary way that we identify users of the Faria WatchDog™.

Enter your vessel's U.S. Coast Guard Vessel Documentation number or Vessel State Registration number. You do not need both numbers.

Be sure to identify the region you are fishing in. If you fish in multiple regions contact your local NOAA fisheries Dept. for the correct region to enter.

Payment Information

This is the information that Faria WatchDog Inc. will use to collect payment for monthly monitoring services based on the VMS plan you selected.

Enter your Credit Card Information

(This is a secure sight. We will not sell your information or share it with others.)

Name

Your name must be entered as it appears on the front of your credit card.

Credit Card

Do not use “-“ between numbers when entering credit card numbers.

Use the “Register” button to complete your registration. Be sure to read the disclaimer before using the register button.

Disclaimer: By sending this Agreement, I certify that I am authorized to execute this Agreement either as the registered vehicle owner or the owner’s agent. I understand and agree that I will be responsible for and will guarantee payment for the WatchDog™ annual service an that an early termination fee of \$240 prorated over the length of the service agreement applies to subscriptions in the following states: AL, FL, GA, KY, LA, MS, NC, SC, TN, NY and parts of IN and NJ. A non-prorated \$150 early termination fee applies in all other areas.

Once your credit card information and your WatchDog™ serial number have been verified you will receive a notification via e-mail that your account has been set up and you can log in and begin using your new Faria WatchDog™ system.

Important

The Faria WatchDog™ system is only an aid to operation of a boat. The performance of the system and the system performance specifications can be affected by many factors including but not limited to equipment failure, environmental conditions, improper installation, handling and/ or use. This device should not be used for any navigational or safety purpose. The Faria WatchDog™ is used at your sole risk and in no event shall Faria WatchDog, Inc. be liable for any costs, losses, liabilities, damages, expense or claims of any nature incurred or sustained in respect of this device or its use. You further indemnify and hold harmless Faria WatchDog, Inc. from any liability or loss resulting from use of the device.



Faria WatchDog™ VMS Tracking on-line

Go to www.vmstracking.com and log in.

Use the e-mail address and password you supplied when registering your WatchDog VMS purchase prior to installation.

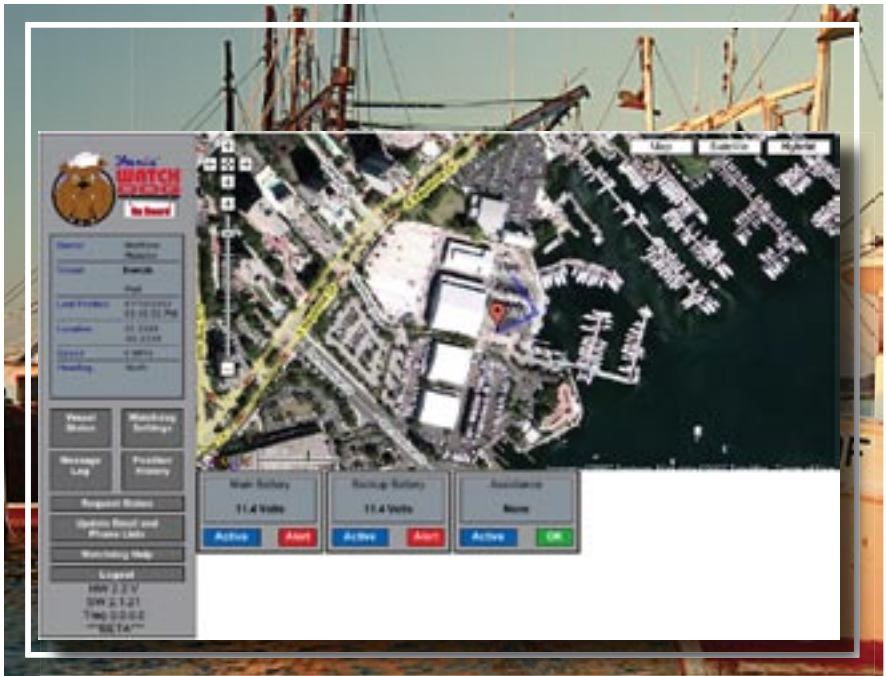
e-mail: _____

password: _____

Now that you have successfully logged onto your vessel's web page, you can begin to navigate through all of the features of the WatchDog™ system. When you finish with this section you will have:

1. Set-up your lists of persons to be notified in the event assistance is required from your vessel, who will be notified of a low battery condition, and who you would like to get your vessel's daily report.
2. Become familiar with all of the options available to you within your web page.

The first thing you will see after logging into the www.vmstracking.com web site using your User log-in and password, will be the “**Vessel Status Page**.” This page will give you a summary of all the information available to you through the WatchDog™ VMS system.



Vessel Status

The VESSEL STATUS page gives you all of the information available from your WatchDog™ System.

Status Bar

Located on the left-hand side of the page, this gives you a snapshot of information regarding your vessel. This information includes,

- Owner: The name you entered when you signed up on the registration page.
- Vessel: The name of your vessel
- Last Position: This is the date and time of the last position reported of your vessel.
- Location: This is the last reported latitude and longitude of your vessel.
- Speed: This is the last reported speed, in MPH, of your vessel.
- Heading: This is the last reported heading, or direction, of your vessel.

Map

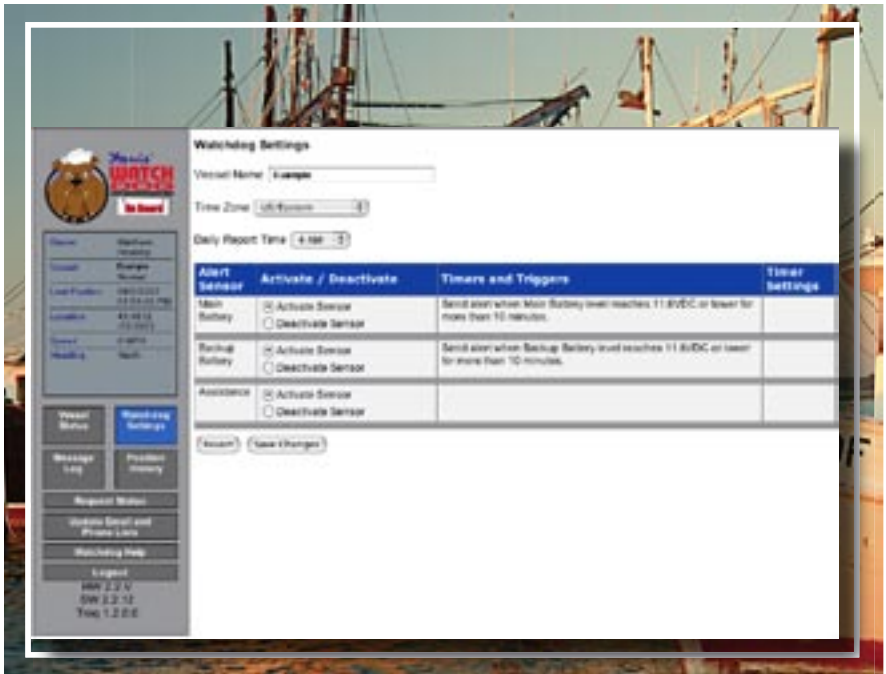
The map shows you a graphical representation of your vessel's location.

You can change the view from Map to Satellite or a combination of both (Hybrid).

Alert Status

The boxes on the bottom of the page, under the map, show your Main Battery Voltage, Backup Battery Voltage (if activated), and your Assistance Notification.

The smaller boxes indicate if the sensors are Active, Inactive, in Alert Mode or OK.



WatchDog™ Settings

The WatchDog™ Settings page is where you can control the various alerts.

Click on the button marked “WatchDog™ Settings” located on the left-hand side of the web page in the **Status Bar**.

Begin by selecting the Time Zone that your vessel will be operating in.

Next, enter the time you would like your daily report e-mailed to you.

Battery Level Alerts

There are two alerts available to you in the VMS system. There is a MAIN BATTERY ALERT and a BACKUP BATTERY ALERT. In both cases an alert will be sent via e-mail or cell phone, as requested in the set-up page (see Notifications, below), if the voltage level in either battery is at 11.6 volts or lower for more than 10 continuous minutes.

Make sure the **ACTIVATE SENSOR** is checked next to the Main Battery sensor box.

If you have a Backup Battery connected to the system, make sure the **ACTIVATE SENSOR** is checked next to the Backup Battery sensor box.

When completed click on the “Save Changes” button at the bottom of the page.

Click on the “OK” button.

Assistance

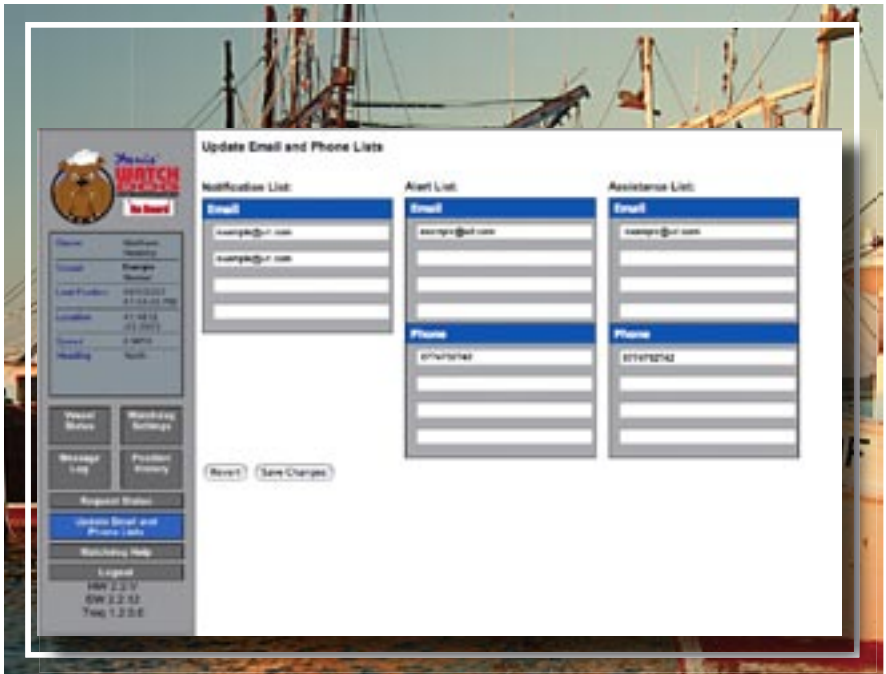
Choose between **Activate Sensor** and **Deactivate Sensor**. If you desire to use this safety feature be sure to select Activate Sensor.

Should anything happen while under way, any person on the vessel can request assistance by using the 2” User Interface on the dash.

Should you need assistance from your boat, you can have up to four e-mail addresses and up to four phone numbers of people contacted from our call center. 24-hours a day, 7-days a week, Faria WatchDog™ is there when you need us the most.

Enter the e-mail addresses and phone numbers in the Notifications and Alert lists found in the next chapter.

For more information about Assistance go to page 28.



Setting up your Notification and Alert Lists

E-mail and Phone Lists

Click on the “Update E-mail and Phone Lists” button located in the information bar on the left hand side of the web page.

In this section you can enter the e-mail addresses and phone numbers of the people you wish to be notified for a Daily Report, Low Battery Alert, or Assistance request.

Notification

Enter the e-mail addresses of up to four people that you would like to have your vessel’s daily report sent to. The Daily Report will give you current voltage of the main battery and (if installed) the backup battery. It will also give you the position of your vessel at the time of your daily report.

Notification List:

Email
example@uri.com
example@uri.com

Alert List

Enter the e-mail addresses and phone numbers of up to four people that you would like to have your low battery alert sent to. (DO NOT ENTER DASHES BETWEEN NUMBERS i.e. 1234567890)

Alert List:

Email
example@url.com

Phone
1234567890

If the Activate Sensor has been checked on your WatchDog™ Settings page, the WatchDog™ will send out an alert when the voltage is 11.6 volts or lower, for 10 continuous minutes, to each e-mail address and phone number in the "Alert" list.

Assistance List

The WatchDog™ system is equipped with an assistance notification feature for your vessel. Should anything happen while under way, any person on the vessel can request assistance by using the 2" User Interface on the dash. (The operation of the 2" User Interface is explained page 27)



Enter up to four e-mail addresses and up to four phone numbers of people you wish to be contacted should there be a request for assistance from your vessel.

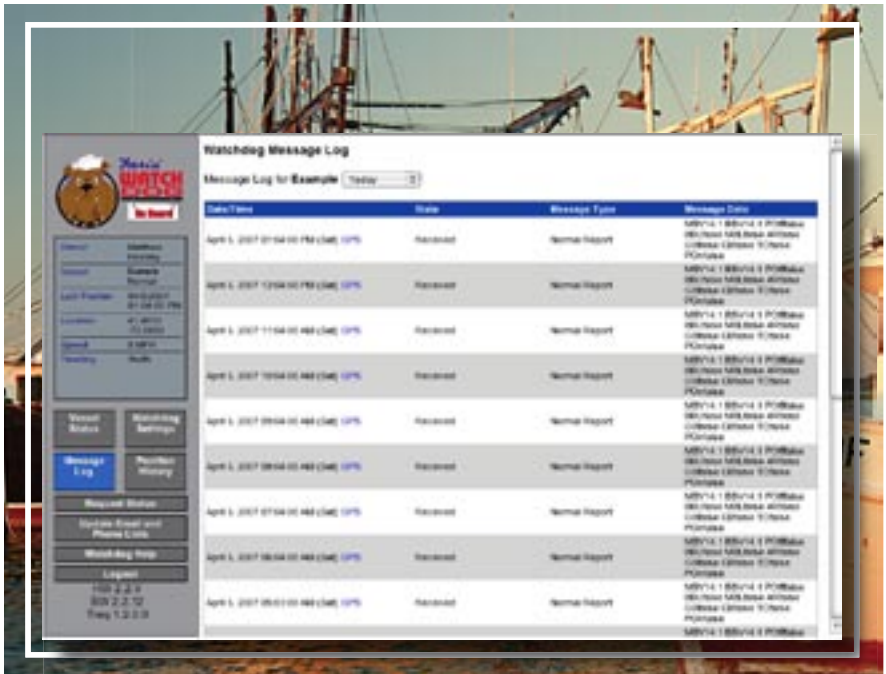
Assistance List:

Email
example@url.com

Phone
1234567890

When you have finished entering all of the contacts, click on the “Save Changes” button to save your information. Then click on the “OK” button to confirm that your changes have been saved.

You can make changes to any of the lists at any time. Remember to click on the “Save Changes” button each time you make a change in order to save the new information.



Message Log

Click on the Message Log button.

You are now viewing the WatchDog™ Message Log page. This page will list all of the messages that have been sent and received by your WatchDog™ System.

You may select how much information you would like the page to display by selecting from the options in the drop down box. You may select “TODAY,” “YESTERDAY,” “LAST WEEK,” “LAST MONTH” or “ALL.” The information will be displayed as follows:

- Date/Time: The date and time the message was sent/received
- State: The state of the message
- Message Type: What the message was regarding
- Message Data: The information contained in the message

Sample of a message in WatchDog™

Date/Time	State	Message Type	Message Data
April 5, 2007 01:04:00 PM (Sat) GPS	Received	Normal Report	MSV14.1 BSV14.1 POFake BLFake MLFake APFake GFake CFake TDFake POFake
April 5, 2007 12:04:00 PM (Sat) GPS	Received	Normal Report	MSV14.1 BSV14.1 POFake BLFake MLFake APFake GFake CFake TDFake POFake

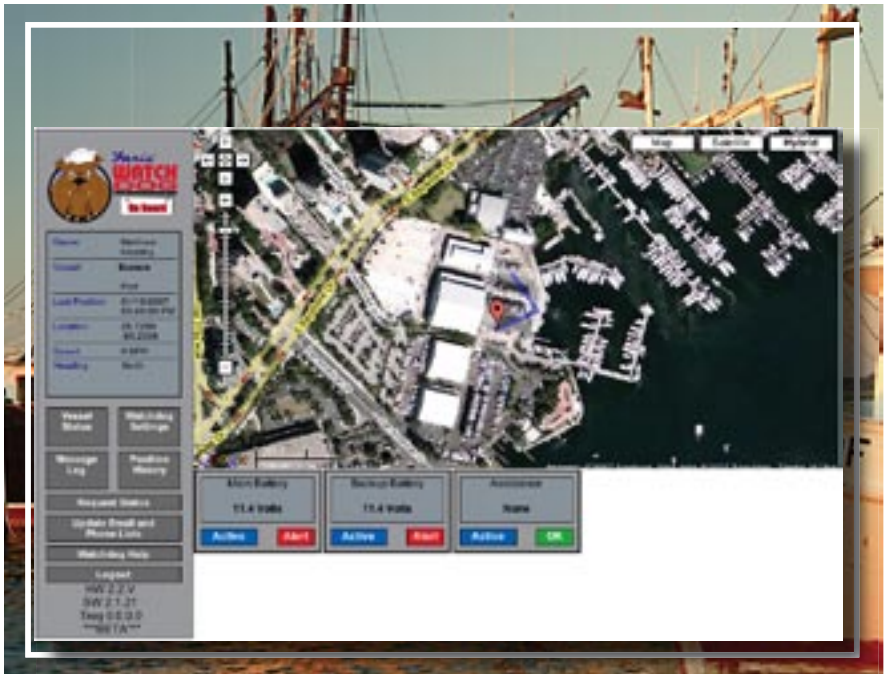
In the example above the WatchDog™ system is reporting that it received a message on April 5, 2007 at 01:04:00 PM indicating a Normal report.

You will see similar messages in the Message Log indicating any information that is either sent or received by your WatchDog™ system.

Date/Time	Latitude	Longitude	Event Type	Speed (MPH)	Heading
April 5, 2007 01:04:00 PM	41.4612	-72.0603	Normal Report	0	North
April 5, 2007 12:03:00 PM	41.4612	-72.0603	Normal Report	0	North
April 5, 2007 11:01:00 AM	41.4612	-72.0603	Normal Report	0	North

In the example above, the vessel position was reported on April 5, 2007 at 01:04:00 PM at a speed of 0 mph with heading north. You can also see the Lat/Lon position at which the GPS position was reported.

If you click on either, the LATITUDE or the LONGITUDE you will be taken to a map that will show your vessel's exact location at the time the report was recorded.



WatchDog™ Maps

There are three different maps for you to choose from with the Faria WatchDog™ system.

Map
Satellite
Hybrid

The default settings is “Map”. The WatchDog™ uses the map to initially show the position of your vessel.

You may select a different view by using the tabs in the upper right of the map.

If a satellite photo is available, you can view your vessel’s position on the satellite photo by clicking on the “Satellite” tab.

If you would like to view your vessel’s position with streets information click the tab marked “Hybrid”

On each of the maps you can use the Zoom tool bar to zoom in or out of any map. Or you may click on the map to drag the view to other areas. The

map will reposition itself.

There you have it. You have now successfully navigated through all of the many options available to you through your new WatchDog™ system!

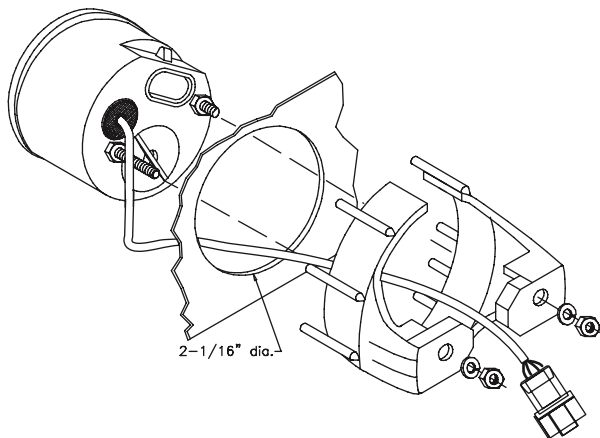


2-inch User Interface

The Faria WatchDog™ 750VMS system comes with a 2-inch user interface display.

The 2-inch User Interface displays the status of communications to the MTU (Mobile Transmitter Unit). The MTU (WatchDog™ black box) uses GPS and at least one communication channel (either GSM or Iridium) to send vessel status and position. The User Interface also allows the operator of the vessel a quick way to seek assistance in the event of an emergency.

Installation



Operation

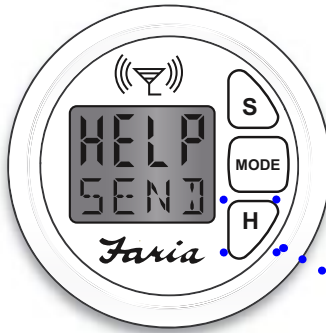
When powered-up, your interface display will beep and the LCD display will light up. When your WatchDog™ 750 VMS is running, the 2-inch User Interface will show one of the following messages:

- 1) **'Wait'** with Red LED's off. This is a boot up message on the 2-inch User Interface that indicates that the unit is trying to communicate with the WatchDog™.
- 2) **'Comm'** with Red LED's off. This indicates that the WatchDog™ is running, has a GPS fix and has at least one communication channel open (GSM and/or Iridium).
- 3) **'No Comm'** with Red LED's on continuously: This indicates that the WatchDog™ is running, but either cannot get a GPS fix, cannot communicate (via GSM or Iridium), or both GPS and the communication links are down.

Assistance Button

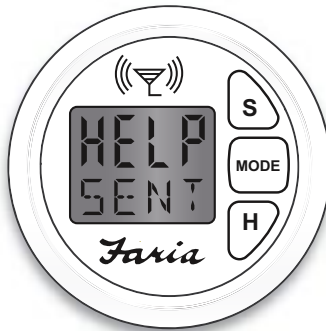
The WatchDog™ system is equipped with an Assistance Notification function. **Any person on the vessel can request assistance by using the 2-inch User Interface.** Once requested, an assistance alert will be sent to those people listed on the notification page by e-mail and phone (see **Setting up your Notification and Alert Lists**, page 17).

Pressing and holding the "H" button for 5 seconds will put the WatchDog™ into the ASSISTANCE MODE. In this mode, someone on the vessel has requested assistance. The screen will display "HELP SEND" indicating that the WatchDog™ system has requested assistance.

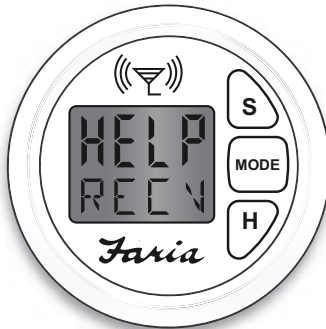


• Press and hold for 5 seconds.

Once the request has been sent, the screen will change to “HELP SENT.”



This is to indicate that the WatchDog™ system has sent out a request for assistance. The WatchDog™ has been triggered to send out an e-mail or a phone call to those people who are listed on the “Alert List” in the WatchDog™ settings page. Once the e-mails and phone calls have been made the interface screen will change to “HELP REC.V.”



WARNING: “HELP REC.V” DOES NOT INDICATE THAT THE PEOPLE THAT YOU HAVE LISTED ON YOUR SETTINGS PAGE HAVE BEEN NOTIFIED.

“HELP RECV” only indicates that the e-mails have been sent and the phone calls have been made. It does not indicate that connection has been made with any individual. In the case of emergency contact the United States Coast Guard on channel 16 on your VHF radio.

Pressing the “S” button will disable the audio alarm without cancelling the Assistance Notification. The red LED’s will continue to flash.

Pressing and holding the “H” button for 5 seconds will take the system out of the ASSISTANCE REQUEST mode and return to the Normal Mode.

Diagnostics



Press the “S” button to enter the STATUS MODE. Pressing the “MODE” button will cycle through five status displays.

The displays are as follows:

(DB model only) GSM Signal strength, from 0 (no signal) to 5 (best signal)



Sat Availability, 0 (not available) or 5 (best signal)



GPS PDOP x 100 (a PDOP of 1.23 will read 0123), 9999 (no GPS), lower numbers represent a better connection.



Main battery voltage x100 (a main battery voltage of 12.34 will read 1234)



Backup Battery voltage x 100 (a voltage of 10.0 will read 1000)



Press the "S" button to exit the "Status Mode" and return to "Normal Mode"



Faria VTERM™

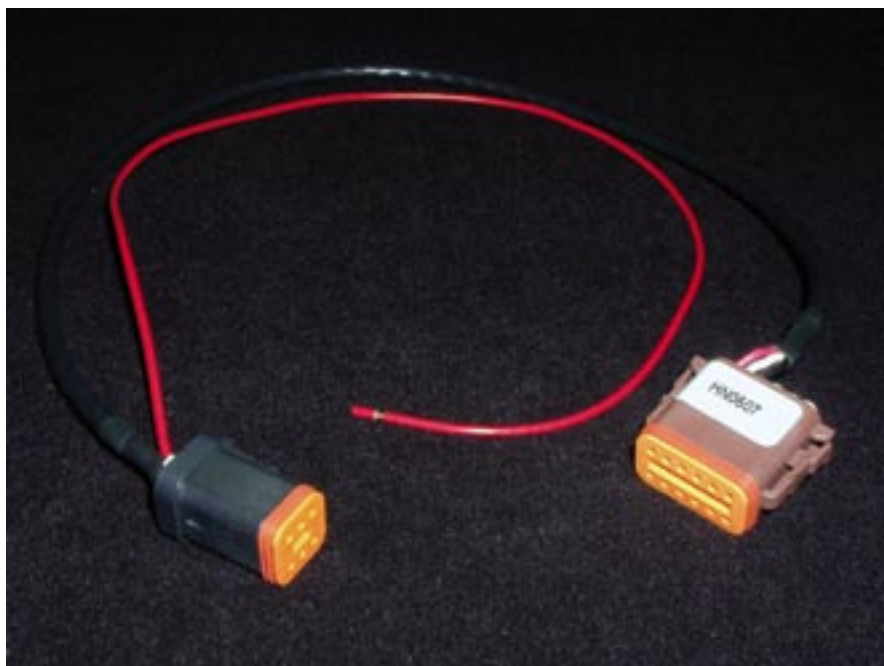
The Faria WatchDog™ VMS750 can also be equipped with a touch screen monitor, Faria VTerm, that is capable of sending all of the necessary catch reports as well as e-mail from your vessel anywhere in the world.

The catch reports are pre loaded and are accessible with a touch of the screen. The Faria VTERM™ is a Windows® CE based system that allows you e-mail access and catch reporting while at sea or at the dock (without attachments!). The Faria VTERM™ also has two USB ports which allow you to add a keyboard and a mouse.

The Faria VTERM™ is a rugged, graphic commercial vehicle/vessel computer running Windows® CE 5.0. It features a rugged polycarbonate housing designed to withstand everyday use in the commercial vehicle/marine environment. The unit is sealed to both NMEA-12/13 and IP-44 standards and is intended for in-cabin (or in a water resistant Electronics Box) use primarily to provide a degree of protection against circulating dust; falling dirt; and spraying, splashing and seepage of sea water and non-corrosive liquids.

Installation

Connect the 6-pin connector from the VTERM™ to the 6-pin connector on the HN0607.



Connect the red wire directly to the battery.

Note: It is recommended that you install a 5A in line fuse if the length of wire needed to connect to the battery is longer than 72" (a water tight fuse

holder is included).

Power-Up:

After the Faria VTERM™ has been connected to the 12 volt power supply the unit will power up after approximately 10 seconds. You will hear an audible tone to indicate the unit is powered up and the Faria WatchDog™ VMS logo will appear on the screen.



Function Keys



F1 = Help/FAQs

F2 = Display forms

F3 = Go to the e-mail in box

F4 = Change the display to day/night view

F5 = Turn VTERM display brightness UP

F6 = Turn VTERM display brightness DOWN

F7 = Left mouse click key

Compass mouse performs the mouse functions.

Keyboard (If Available):

Plug the USB connector from any USB keyboard into either of the two USB ports on the VTERM™. One is located on the front of the unit on the bottom left hand side.



The other is on the back of the unit. (If you have a separate mouse and keyboard you will need to use both USB ports)



The on-screen keyboard pops up for use when composing e-mails. You can make the keyboard larger or hide the keyboard if you do not wish to use it by clicking on the icon in the bottom right hand corner of the Faria VTERM™ screen.



E-mail Operation

Double click on the “IN BOX” icon using either the touch screen or the keyboard/mouse or press F3.



The e-mail will open and the screen will show your in box.

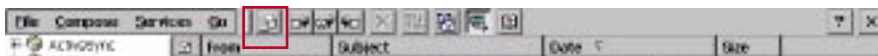
IMPORTANT- For the initial start-up, click once on the double envelope icon at the top of the screen. (This is only necessary for the initial power up. You will not need to do this again)



You are now ready to send and receive e-mail.

Writing and Sending an e-mail:

1. Click on the first icon that shows a letter and an envelope at the top of the screen, or click on COMPOSE and then NEW MESSAGE.



2. Using the on-screen keyboard or your USB keyboard enter the e-mail address of the person you would like to send an e-mail. (You may also click on the address book icon and select a recipient that has been entered into the address book.)



3. Click on the Subject Line and enter the subject of your e-mail

4. Click on the body of the e-mail and begin typing your e-mail.

5. To send your e-mail click on the SEND icon (sealed envelope) or click on FILE and then click on SEND.



Reading e-mail:

When an e-mail has been sent to your vessel a message box will appear in the center of the Faria VTERM™ indicating that you have a new message. From the in box simply double click on the new message.

Address book:

You have the capability of storing multiple e-mail addresses in your VTERM™.

From the In box main screen:

1. Click on the ADDRESS BOOK icon.



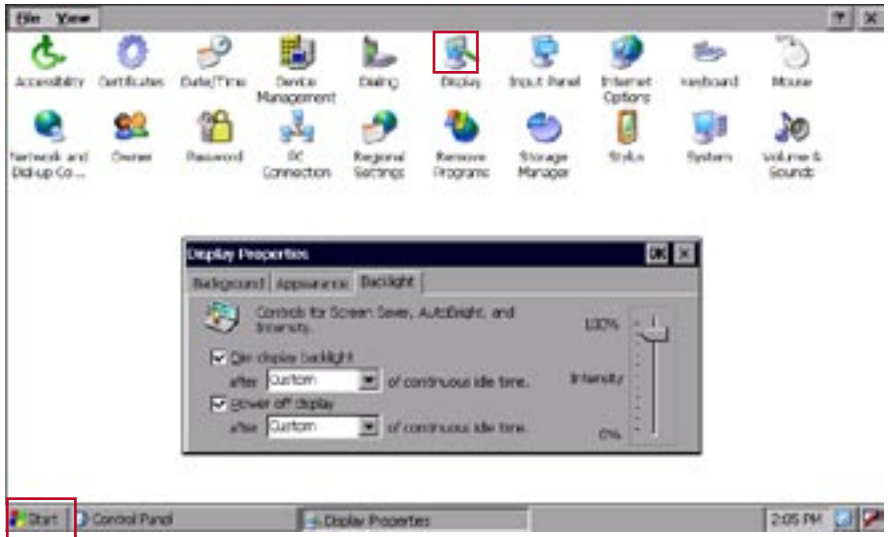
2. Click on NEW
3. Enter the name of the person
4. Enter the e-mail address of the person
5. Click on OK

*In Windows® CE in order to minimize the windows you click on the tool bar (with the name of the window you want to minimize) at the bottom of the screen.

Display Settings:

You have the ability to change the intensity of the backlighting as well as the “sleep” mode for the Faria VTERM™.

1. Click on the START button
2. Click on SETTINGS
3. Click on CONTROL PANEL
4. Double click on the DISPLAY icon
5. Click on the BACKLIGHT tab



In this window you can control the lighting intensity by clicking on the slide bar and increasing or decreasing the lighting intensity.

You can also control the amount of time the backlighting will stay at your selected intensity or Dim the backlighting to a pre-set intensity when not in use.

1. If you want this feature click on the box next to DIM DISPLAY BACKLIGHTING.
2. Select one of the programmed intervals on the drop down menu or select CUSTOM for a custom setting and enter the time you like.

You can also control when the Faria VTERM™ will go into a “Sleep” mode. This feature is used to conserve power if the unit will not be in use for some time.

1. If you want this feature click on the box next to POWER OFF DISPLAY
2. Select one of the programmed intervals on the drop down menu or select CUSTOM for a custom setting.

Once you have made all of your adjustments click on the OK button in the top right hand corner of the window.

The Function keys on the Faria VTERM™, **F4** (Change display to Night/Day), **F5** (Turn display brightness Up), **F6** (Turn display brightness down) can also be used to adjust the lighting intensity of the Faria VTERM™.



P.O. Box 486,
Uncasville, CT USA 06382-0486
Toll Free Customer Service: 877-888-5569
Fax: 860-848-2704
www.fariawatchdog.com

Transferable Limited

Lifetime Warranty

During the first twenty-four (24) months from date of original retail purchase of a Faria WatchDog™ 750VMS, or twelve (12) months from date of original retail purchase of a Faria VTERM™, and purchase of the 2-inch User Interface that fails due to defects in materials or workmanship will be repaired or replaced, at our option, at no charge. The Warranty is further extended indefinitely beyond the initial warranty period by enclosing the fee listed below when submitting a warranty claim.

To submit a Warranty Claim, call Faria WatchDog, Inc. Customer Service toll free at 1-877-888-5569 weekdays 8:30 a.m. until 5:00 p.m. Eastern Time. One of our WatchDog™ Applications Specialists will review the problem with you in detail. If no solution is found, you will be given an authorization number to return the product, postage prepaid. Package the part to prevent damage while in transit. Provide your name, address, daytime telephone number, sales receipt, and a brief description of the problem, to:

Faria WatchDog Inc.
WARRANTY SERVICE
P.O. Box 486,
385 Norwich-New London Turnpike
Uncasville, CT 06382-0486.

Extended Warranty fees:

Faria WatchDog™ 750VMS DB-	\$1,296.00*
Faria WatchDog™ 750VMS SB-	\$1,100.00*
Faria VTERM™ -	\$1,260.00*
2-inch User Interface -	\$ 95.00*

Removal / reinstallation expenses, any damage to the Faria WatchDog™ 750VMS or Faria VTERM™ resulting from natural disasters, misuse, neglect, accident, misapplication, improper installation, unauthorized repair or alteration are not covered by this warranty. Products returned to Faria Watchdog Inc. that are not covered under this warranty will be repaired or replaced at our service rates or returned to you as is, at your option. Faria WatchDog Inc. expressly disclaims any liability for incidental or consequential damage caused by product defects. Some states do not allow the exclusion or limitation of consequential damages, so the above may not apply to you. The Warranty herein is in lieu of any other expressed warranty of merchantability or fitness or any other obligation on the part of Faria Watchdog Inc. or the seller. All implied warranties are limited to the initial period, stated above. Some states do not allow limitation on how long an implied warranty lasts, so the above limitation may not apply to you. This warranty gives you specific legal rights, and you also have other rights, which vary from state to state.

*These fees are in effect as of 1/02/2007 and are subject to change without notice.

IS0241a 01/2007 ECR6727

Notes:

Faria is the registered trade marke of the Thomas G. Faria Corporation.
Faria VTERM, WatchDog 750VMS and Faria WatchDog are trademarks of Faria WatchDog Inc.
Microsoft and the Windows logo are registered trademarks of Microsoft Corporation. All brand names
and trademarks are the property of their respective owners.